

# REGIONAL STUDIES ASSOCIATION

## RESEARCH, FUNDING & AWARDS

The Regional Studies Association allocated financial resources to support research projects and to provide a range of funding opportunities to suit different career stages. In offering these grant schemes, we are seeking to raise the profile of regional research and its contributions. These opportunities provide members with the chance to apply for financial help to support their work, run networking events, receive awards for excellence, help towards the costs of travel to attend non-RSA events, and to present their work to international audiences. Please note that non-members are encouraged to apply and join the RSA at the same time.

### Policy Expo Grant Scheme

The Association has launched a new policy research initiative for teams to connect their work and wider communities to societal questions and policy needs. Policy Expos deliver a short form policy-focussed, evidenced book; and an open access article in *Regional Studies*, *Regional Science*.

In 2019, applications are invited on the following themes:

- **Infrastructure connectivity**
- **Austerity urbanism and inclusive growth**
- **Sustainable energy**

**Value: up to £15,000** (c. €17000; \$18,000)

**Application deadline: 12th June 2019**

### Early Career Research Grant Scheme

This award is open to single applicants in their early career (five years maximum between the date shown on the PhD certificate and the application deadline). Applicants must be based within an eligible higher education institution and must be a current early career member of the RSA and throughout the duration of the grant. Please note that applicants may join the RSA as members at the same time as applying for the grant.

**Value: up to £10,000** (c. €11500; \$12,000)

**Application deadlines (Expression of Interest): 28th May 2019**

### Membership Research Grant Scheme (MeRSA)

The RSA Membership Research Grants support a discrete piece of regional studies and/or regional science research. This research funding scheme is intended primarily to provide opportunities for mid-career scholars who have already published in the field of regional studies and science and who are Individual Members of the RSA. The award has a maximum time span of 18 months and reporting conditions apply.

**Value: up to £5,000** (c. €5700; \$6000)

**Application deadline (Expression of Interest): 15th May 2019**



@regstud, @RSAEurope



@RegionalStudiesAssociation



Regional Studies Association

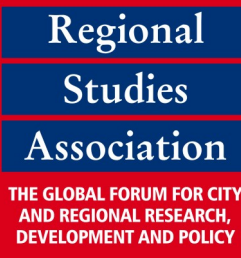
office@regionalstudies.org

Regional Studies Association  
(RSA)

Sussex Innovation Centre  
Falmer Brighton  
BN1 9SB, UK

www.regionalstudies.org

+44 (0)1273 698 017



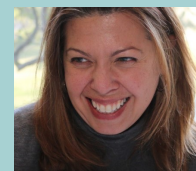
**Luís Carvalho**  
University of Porto,  
Portugal  
*FeRSA Grant*



**Elisa Giuliani**  
University of  
Pisa, Italy  
*MeRSA Grant*



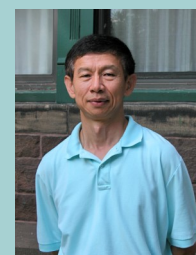
**Anil Kumar Roy**  
Center for  
Environmental  
Planning and  
Technology CEPT  
University, India  
*Travel Grant*



**Jennifer Clark**  
Georgia Institute  
of Technology,  
USA  
*Research  
Network Grant*



**Jana Kleibert**  
Leibniz Institute for  
Research on Society  
and Space,  
Germany  
*RSA Routledge  
Early Career Award  
2018*



**Xiangming Chen**  
Trinity College,  
USA  
*Policy Expo Grant*



**Iris Wanzenböck**  
Utrecht University,  
Netherlands  
*Early Career Grant*

## Fellowship Research Grant Scheme (FeRSA)

This award is open to Fellows of the RSA only. RSA Fellows are members who have been continuous members for a minimum of 5 years and who have also been defined as “active members”. This means that they have contributed to the life of the Association through serving on the Board or committees, have spoken at conferences, have applied for funding etc. All applicants are required to set out their dissemination plans not only through academic networks (e.g. conferences and publishing) but also to communities of policy and practice.

**Value: up to £7,500** (c. €8500; \$9,000)

**Application deadline (Expression of Interest): 15th May 2019**

## Research Network Grant Scheme

RSA Research Networks are formed by RSA members interested in meeting to examine an issue that responds to the aims and goals of the Association and is of interest and concern to members of the Association as well as non-members. The issue needs not necessarily to have a direct policy focus, but the examination would normally lead to policy-related conclusions.

**Value: up to £10,000** (c. €11500; \$12,000)

**Application deadline: 27th September 2019**

## Travel Grant

The RSA offers its members up to £500 towards travel costs when attending a non-RSA event. Recipients of the Travel Grant must be members of the Association at the time of the application, at the time of travel and claim. Non-members are encouraged to apply and join the RSA at the same time.

**Value: up to £500** (c. €570; \$600)

**2019 Deadlines: 28th February, 31st May, 13th September & 29th November**

## RSA Awards 2019

Nominations (both self-nominations and third party nominations) of current members are being sought for the following awards in regional studies and related fields, which will be awarded by the RSA Award Committee.

- **Nathaniel Lichfield Award** - this award is for recent Master's graduate who have graduated within the previous year;
- **RSA PhD Student Award** - this award is for registered PhD students who have not yet received their certificate;
- **RSA Routledge Early Career Award** - this award is for early career researchers defined as being within five years of the date on their PhD certificate or equivalent.

**Value:** The prizes for each award are: £500 (c. €570; \$600); a certificate; up to £200 funds toward travel costs to attend the RSA President's Event.

**Forthcoming deadline: 30th April 2019**

Regional  
Studies  
Association

**More information on RSA funding and awards is available at [www.regionalstudies.org/funding](http://www.regionalstudies.org/funding)**



**David Gibbs,**  
University of Hull, UK

*I was very pleased to be awarded a Fellowship Research Grant which allowed me to further develop my research into the green economy and regional development. This has led to opportunities to build links and collaboration with researchers and policy makers across Europe, as well as to network with the wider Regional Studies community. The research itself has led to invitations to present at conferences, publications and also formed a useful pilot study for larger scale research grant applications.*



**Mia Bennett**  
University of Hong Kong, China

*I'm excited and honored to receive an RSA Early Career Grant. The award will go a long way towards helping me undertake research into Indigenous land claims and land use arrangements. I'm especially looking forward to carrying out comparative fieldwork between communities in the Arctic and Asia that I would not be able to do without the RSA's support.*



**Phil Tomlinson**  
University of Bath, UK

*The value of the RSA Expo scheme is much greater than a standard small grant. The scheme is deliberately inclusive, with stipulations to include at least one early career and one overseas researcher. This has enabled us to bring together a new team, with different, yet complementary levels of experience and expertise to work together on a salient policy-facing issue. Throughout, we have had excellent ongoing support from the RSA office, who have opened doors and assisted us in bringing our research to a wider policy and practitioner audience, at regional, national and EU levels.*



**Heike Mayer**  
University of Bern, Switzerland

*The RSA Membership Grant allows me to engage in exploratory research by doing field work in the European Alps. This research uses a comparative approach and traditional funders may not support such a study.*