

# Join Us for a Lunchtime Talk about Social Safeguarding and Development Careers

with

**ARI PERDANA**

---

## ***Evaluating social and environmental safeguard capacity building in the Pacific: In search of evidence at Asian Development Bank***

---

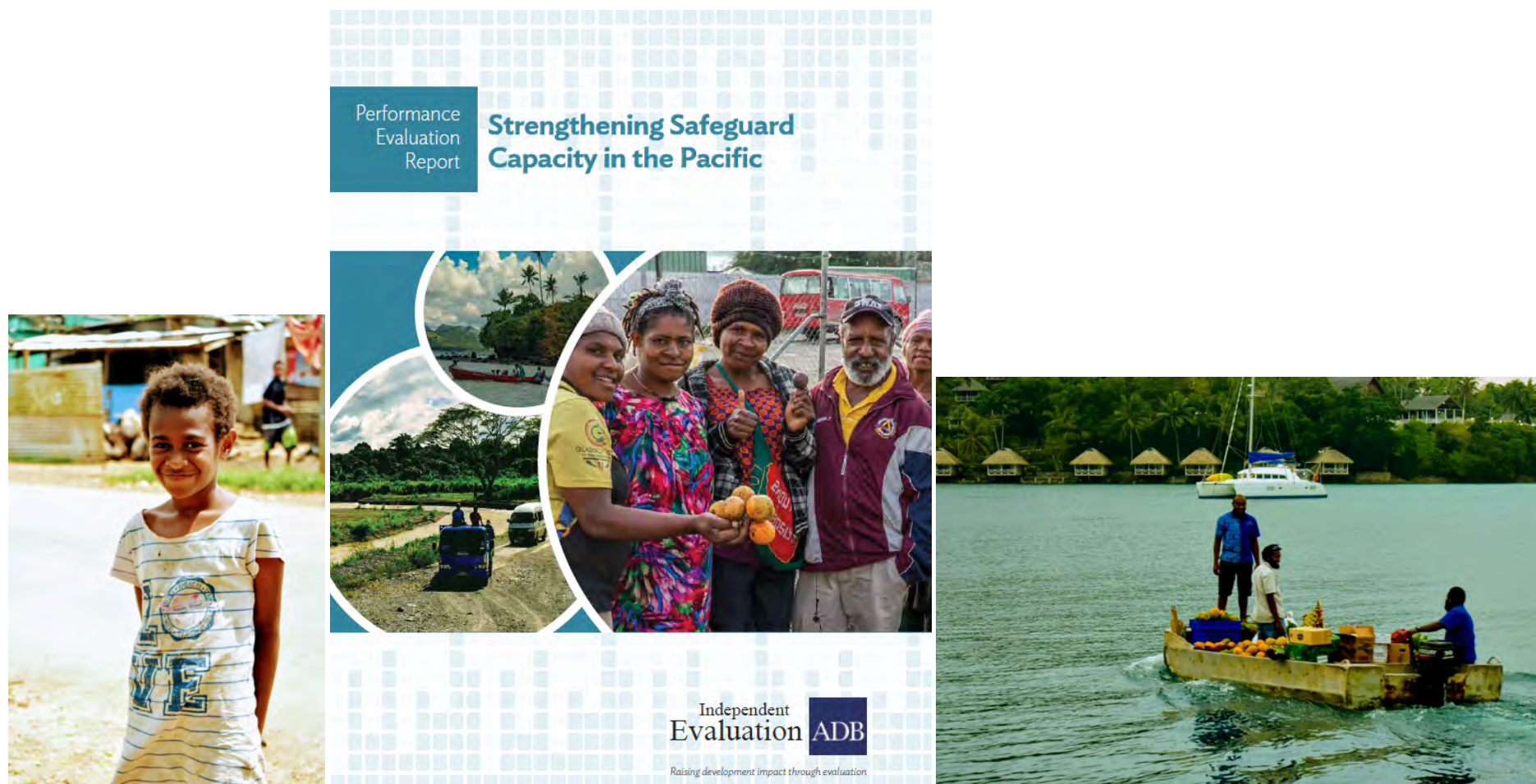
**Friday, 27 September**

**11:30am – 1pm**

Presentation of the report, Q&A  
Lunch provided.

**1-2pm**

Q&A session for students interested in  
development careers



The session will discuss several key themes: independent evaluation processes from a prominent multilateral regional lender; social and environmental safeguard capacity building; and their application in the context of small Pacific States in the shadow of climate change. Based on a recent evaluation study that is now publicly released, the presentation seeks interactive feedback on future directions.

**Ari Perdana**, a former ANU graduate, is an evaluation specialist at the Independent Evaluation Department (IED) of the Asian Development Bank (ADB). Previously he worked at the Government of Indonesia's National Team for Accelerating Poverty Reduction and The World Bank Office Indonesia. He was also a former economic researcher at the Centre for Strategic and International Studies in Jakarta, and lecturer at the Department of Economics, University of Indonesia.

**Susanna Price [session facilitator]**, from ANU's College of Asia and the Pacific, and formerly Senior Social Development Specialist with overall responsibility for ADB's Involuntary Resettlement Policy implementation, will also take part. Susanna co-edited 2 recent Routledge publications: *Global Implications of Development, Disasters and Climate Change: Responses to Displacement from Asia-Pacific* (2016); and *Country Frameworks for Development Displacement* (2019).

Also supported by:



**Contact and RSVP:**  
Jennifer Day, Senior  
Lecturer in Urban Planning  
([jday@unimelb.edu.au](mailto:jday@unimelb.edu.au))